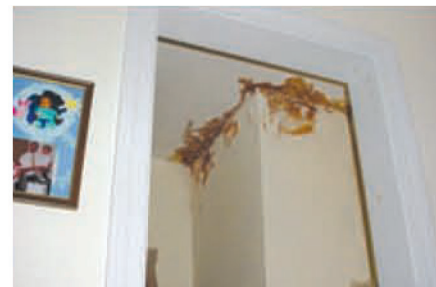


Analysis for Your Home Safety



Staining from Leaking Condensation

The condensation in your chimney is seeping through to the interior of your home, or your chimney exterior, and creating costly damage



Disintegrating Chimney Structure

Acidic moisture goes through freeze and thaw periods, expansion and contraction, creating cracks in your mortar and flue tiles



Poor Draft

You have an improper flue size matched to your heating appliance

Tight Clearance

You have inadequate clearance to the wood framing of your home

Damaged Chimney Structure

Will allow carbon monoxide, smoke, and fire to enter your home

Down-Drafting & Smoke

If you have an improperly lined flue, you can expect an unsteady draft, leading to a down-ward flow, bringing smoke into your home

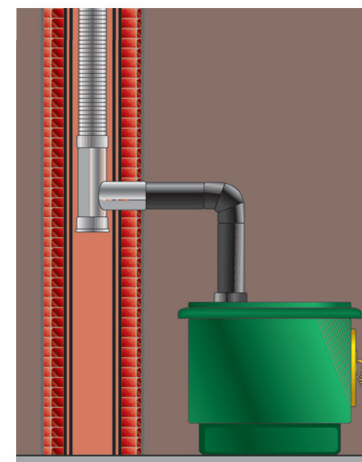
How Safe is Your Home?

Your Local M-Flex Dealer



ONE Solution for every application

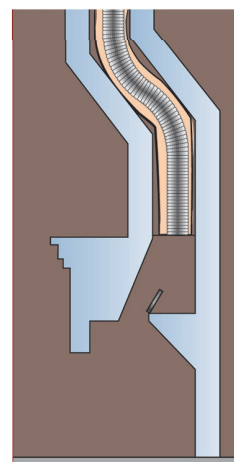
SMOOTHWALL CHIMNEY LINERS



Wood and Pellet Stoves

Oil heating applications

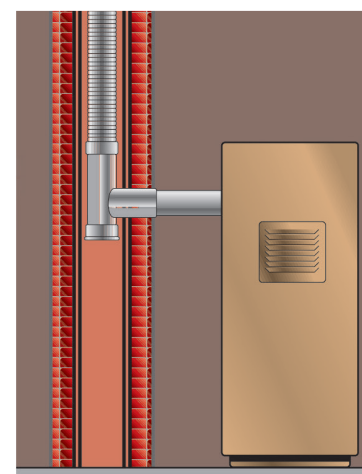
When mixed with acidic condensation, soot buildup on the walls of the chimney from your oil furnace and hot water tank, create sulfuric acid. This will deteriorate the clay flue tiles.



Fireplaces

Fireplaces and wood stoves

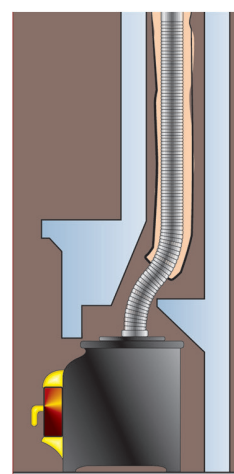
Creosote formation is the unavoidable by-product from burning wood. Most wood stoves are manufactured to vent into an area much smaller than that of your chimney flue. The oversized flue causes a reduced rate of smoke exiting the flue, leaving it to linger and deposit creosote on your tiles.



Water Heaters

Gas heating appliances

Greater amounts of condensation produced by the high efficiency of newer heating appliances, combined with many installations in old oil furnace flues, speeds up deterioration. 2 cubic feet of water vapor is produced with each 1 cubic foot of gas burned.



Fireplace Inserts

The danger with creosote is the 450° F ignition point - consider the average wood stove produces gases leaving your fireplace at 300° F to 900° F - causing a chimney fire up to 2100° F. If your chimney flue has no tiles, it is likely that these gases and creosote are leaking directly into your home, leading to a possible fire or creating carbon monoxide build-up.



Premier Mix



Premier Wrap

Having your liner insulated with either **Premier Mix** -- a poured insulation mixture, or **Premier Wrap** -- a ceramic wool blanket helps create a steady draft and allows for zero clearance installation.

Is the M-FLEX Smoothwall chimney liner durable?

Yes, the smoothwall chimney liner is very durable. It is constructed using .005" thick stainless steel that is formed in a double layer system. It's thicker than any other lightweight flexible chimney liner on the market. Smooth wall is constructed of the same high grade 316L all fuel stainless steel as the traditional corrugated chimney liners.



Realizing the only way to truly control a product is to manufacture. National Chimney has invested in the industry by becoming the premier manufacturer of stainless steel liners and components to match.

Downsizing:

Smoothwall is a great option for those times where you just can't fit the proper size chimney liner in your chimney. Due to the Smoothwall liner's interior properties, you achieve *20% greater airflow*, so often you can get the same venting capability as standard liner 1" larger in diameter. This makes Smoothwall liner the best choice when you need to downsize.

KEY: Reduces drag factor

SMOOTHWALL CHIMNEY LINERS

Smoothwall Chimney Liners for your Safety and Comfort

Why reline a chimney flue —especially when it looks fine?

The flue liner is often the most neglected part of your chimney. Traditional masonry flue tiles cannot handle the acidic moisture created by your furnace, boiler, or hot water tank. This acid attacks and breaks down flue tiles and mortar in between them. This damage can prevent harmful exhaust gases from leaving your chimney and home.

CHIMNEY DEFECTS CAN RESULT IN INJURY OR DEATH FROM FIRE AND CARBON MONOXIDE POISONING.

Having a fire start in your chimney and rising to 2100°F is extremely damaging and dangerous to your family. It doesn't take a lot to start a house fire once your chimney has reached the threatening point of catching fire. One spark through a crack or an ember igniting the creosote and climbing your chimney seeking an escape route is often enough.

No fireplace? Your furnace flue is responsible for venting deadly gases which can escape into your home through the tiniest of cracks.

REAL STATISTICS

In 2001, 656 people died of unintentional non-fire exposure to gases... and there have been more than 30,000 hospital emergency room injuries per year. (NFPA)

SAFETY TIP

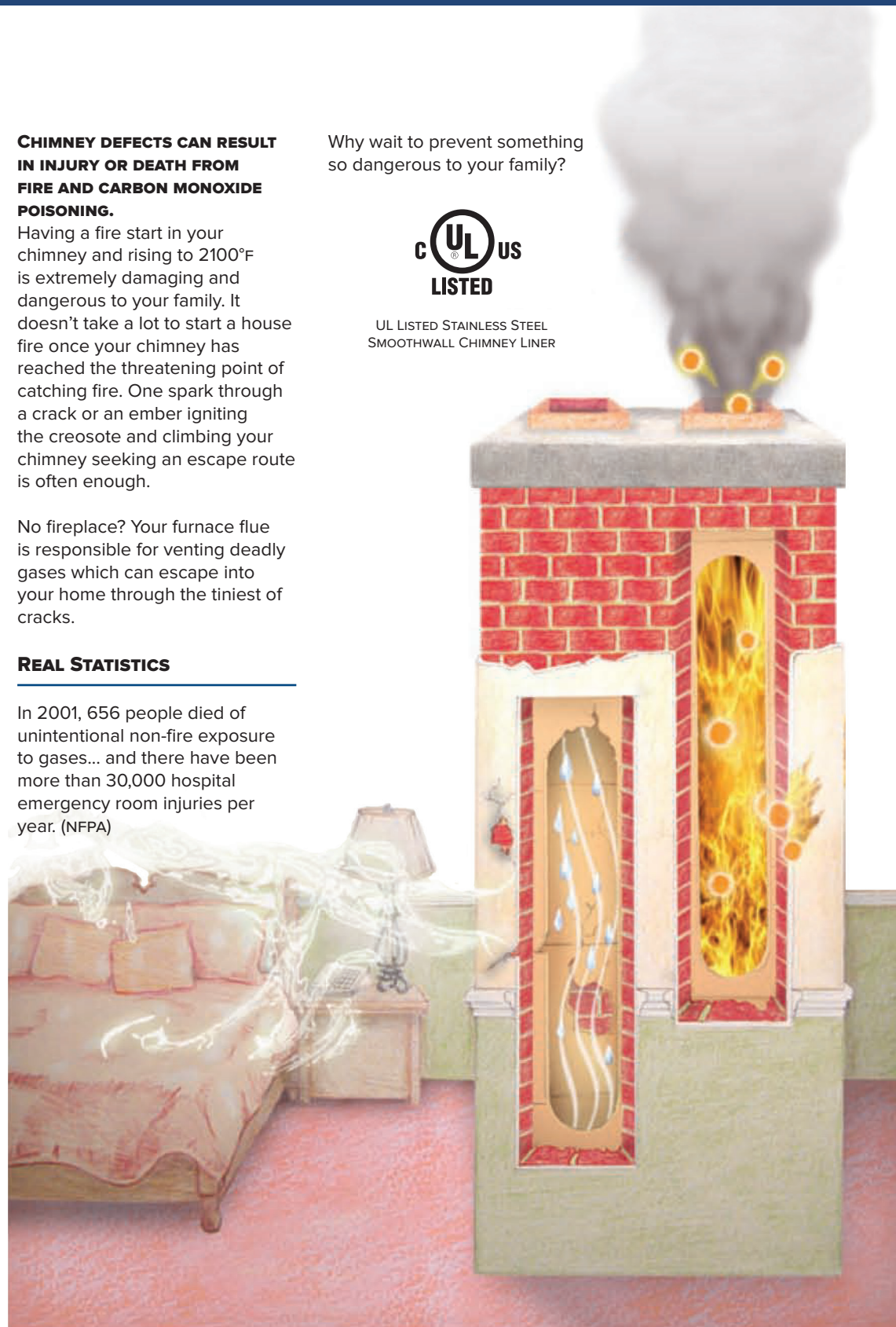
THE NATIONAL FIRE PROTECTION ASSOCIATION (in NFPA 211) says, "Chimneys, fireplaces, and vents shall be inspected at least once a year for soundness, freedom from deposits, and correct clearances. Cleaning, maintenance, and repairs shall be done if necessary."

Don't let damage & deterioration lead to hazardous conditions

Why wait to prevent something so dangerous to your family?



UL LISTED STAINLESS STEEL SMOOTHWALL CHIMNEY LINER



Smoothwall Chimney Liner Kits

UL 1777 listed and tested all fuel 316L stainless steel 2-ply liner

Top kit includes:

Rain cap, storm collar, top clamp, and 13" x 13" top plate

316L stainless steel 2 part tee with removable 10" take off length (snout)

316 Stainless steel tee cap

Stainless steel stove adapter

The **M-FLEX Smoothwall standard and basic liner kits** are used for the same applications as traditional liner kits. However, the Smoothwall standard and basic liner kits offer superior flexibility with a higher btu capacity. Each of our **M-FLEX Smoothwall standard and basic kits** comes with installation instructions and a lifetime warranty.

Smoothwall standard liner kits include:
Smoothwall liner, top kit, tee and tee end cap

Smoothwall basic liner kits include:
Smoothwall liner, top kit and stove adapter



Your perfect solution

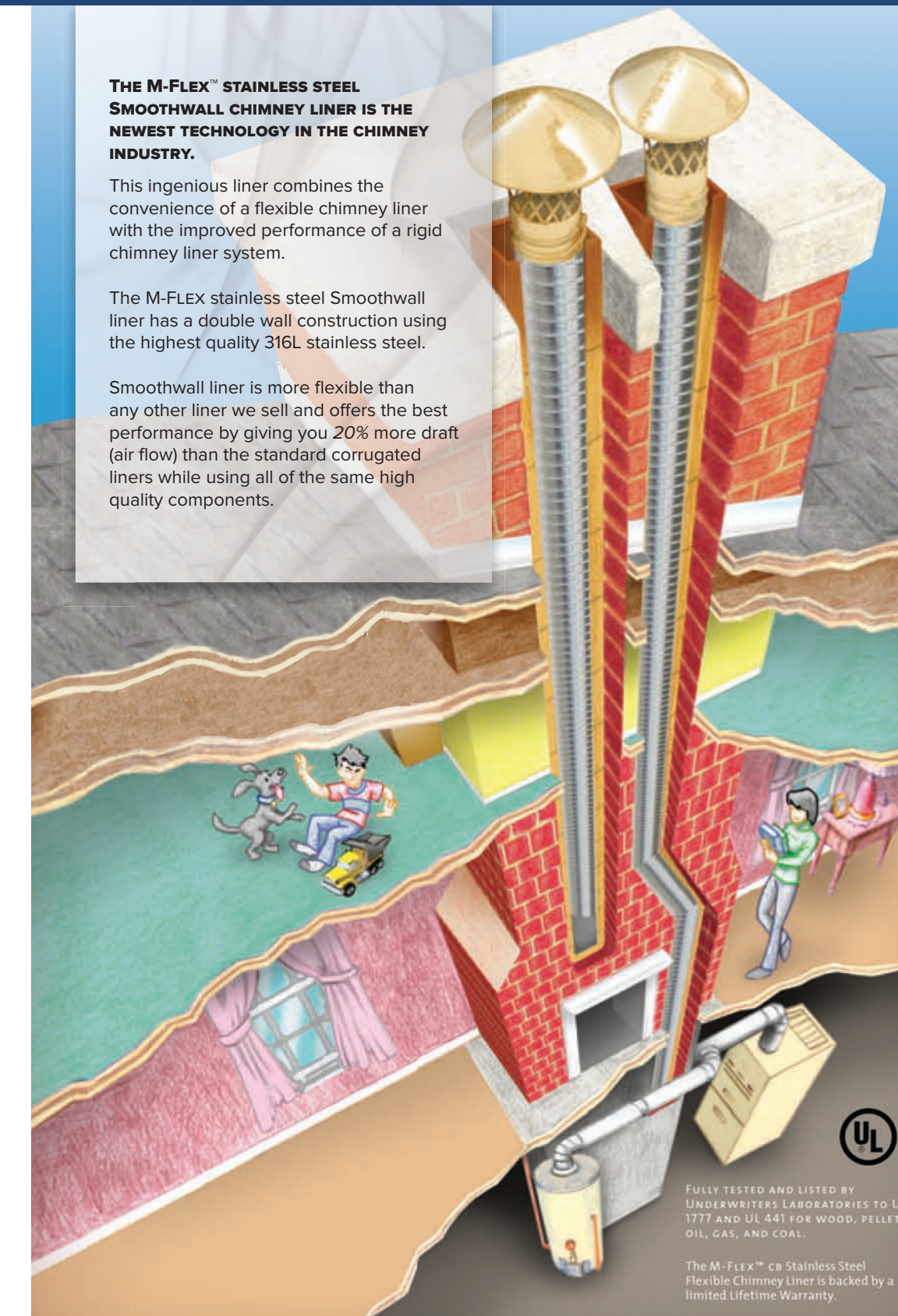


THE M-FLEX™ STAINLESS STEEL SMOOTHWALL CHIMNEY LINER IS THE NEWEST TECHNOLOGY IN THE CHIMNEY INDUSTRY.

This ingenious liner combines the convenience of a flexible chimney liner with the improved performance of a rigid chimney liner system.

The M-FLEX stainless steel Smoothwall liner has a double wall construction using the highest quality 316L stainless steel.

Smoothwall liner is more flexible than any other liner we sell and offers the best performance by giving you 20% more draft (air flow) than the standard corrugated liners while using all of the same high quality components.



FULLY TESTED AND LISTED BY UNDERWRITERS LABORATORIES TO UL 1777 AND UL 441 FOR WOOD, PELLET, OIL, GAS, AND COAL.

The M-FLEX™ 316 Stainless Steel Flexible Chimney Liner is backed by a limited Lifetime Warranty.